

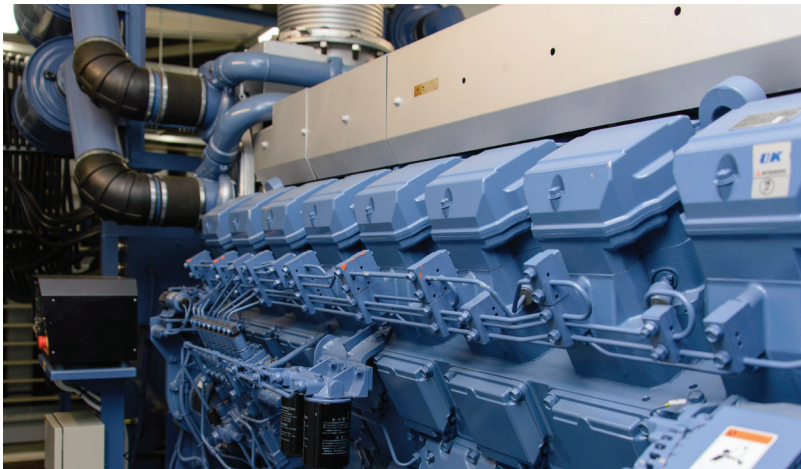
## TENSIONING TOOL SETS FOR GAS & DIESEL ENGINES

TorqLite supplies hydraulic tensioning tool sets to fit gas and diesel engines produced by major OEMs.

### EQUIPMENT LIST

- Hydraulic tensioning tools tailored to suit your specification.
- Lead and link hydraulic hoses.
- Hand, Air-Driven or Electric Pumps available as options (hand pump would be offered as standard).
- Full operating manual.
- Lockable storage box.

**Our sets ensure quick and accurate tensioning of critical bolts on cylinder heads, connecting rods, and main bearings.**



### AVAILABLE TO SUIT:

- Caterpillar 3600
- MAN
- Cummins
- Deutz/MWM
- Wartsila
- GE Jenbacher
- MTU
- Other OEM tool sets can be designed upon request



#### Manufacturing, R&D, and Operations

Address: 8 Dufresne Loop Luling, LA 70070  
Tel: 985-785-3075  
Email: [info@torqlite.com](mailto:info@torqlite.com)  
[www.torqlite.com](http://www.torqlite.com)

#### Sales Headquarters

Address: 5335 Brystone Dr. Houston, TX 77041  
Tel: 713-983-7171  
Email: [sales@torqlite.com](mailto:sales@torqlite.com)  
[www.torqlite.com](http://www.torqlite.com)